


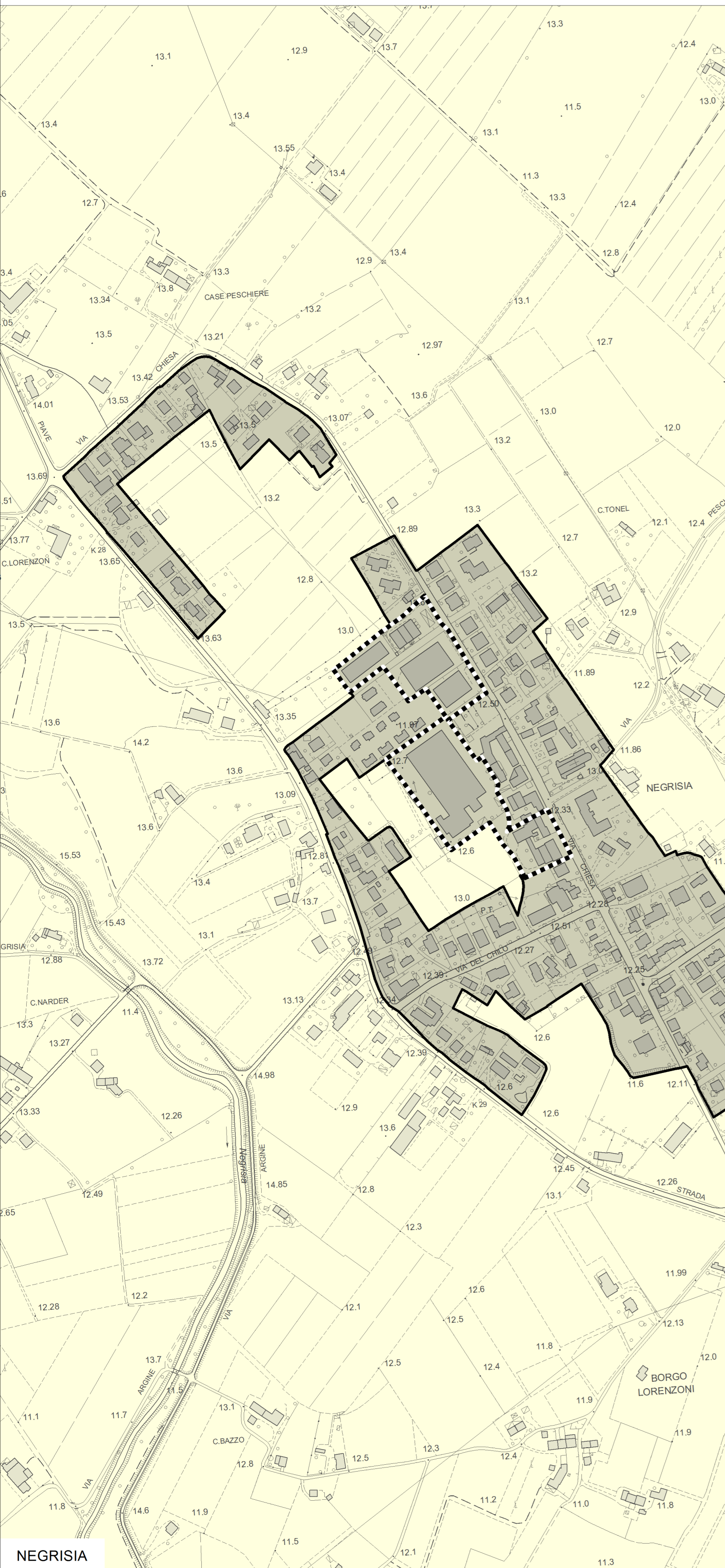
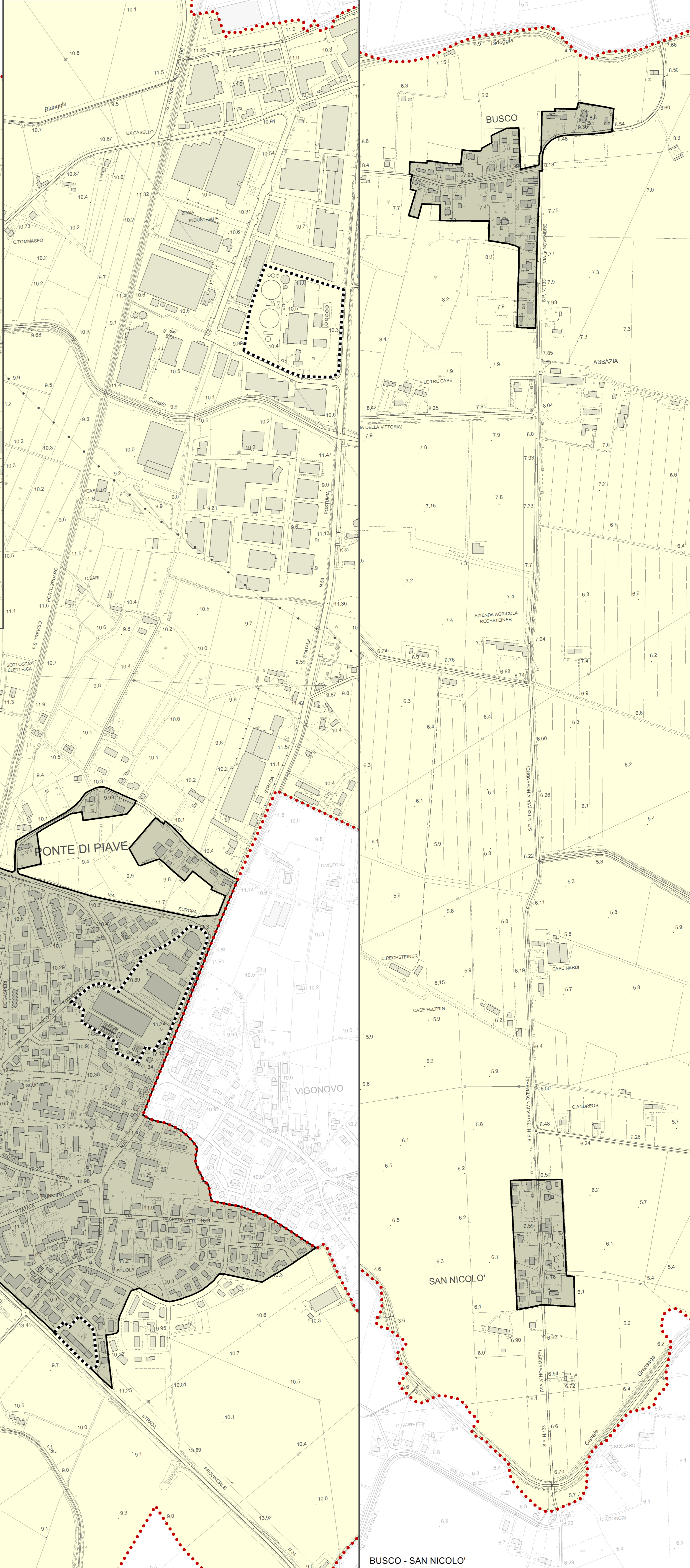
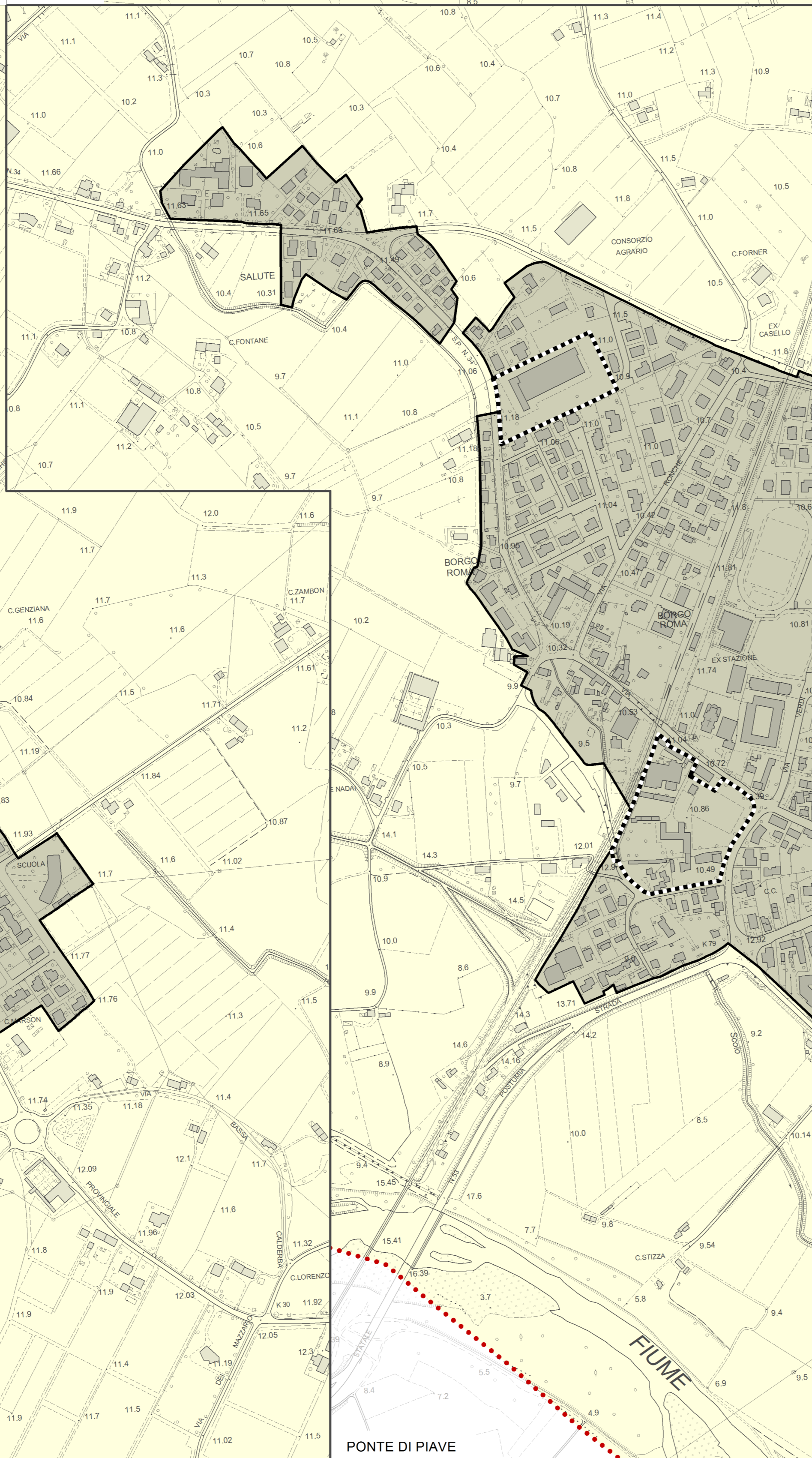
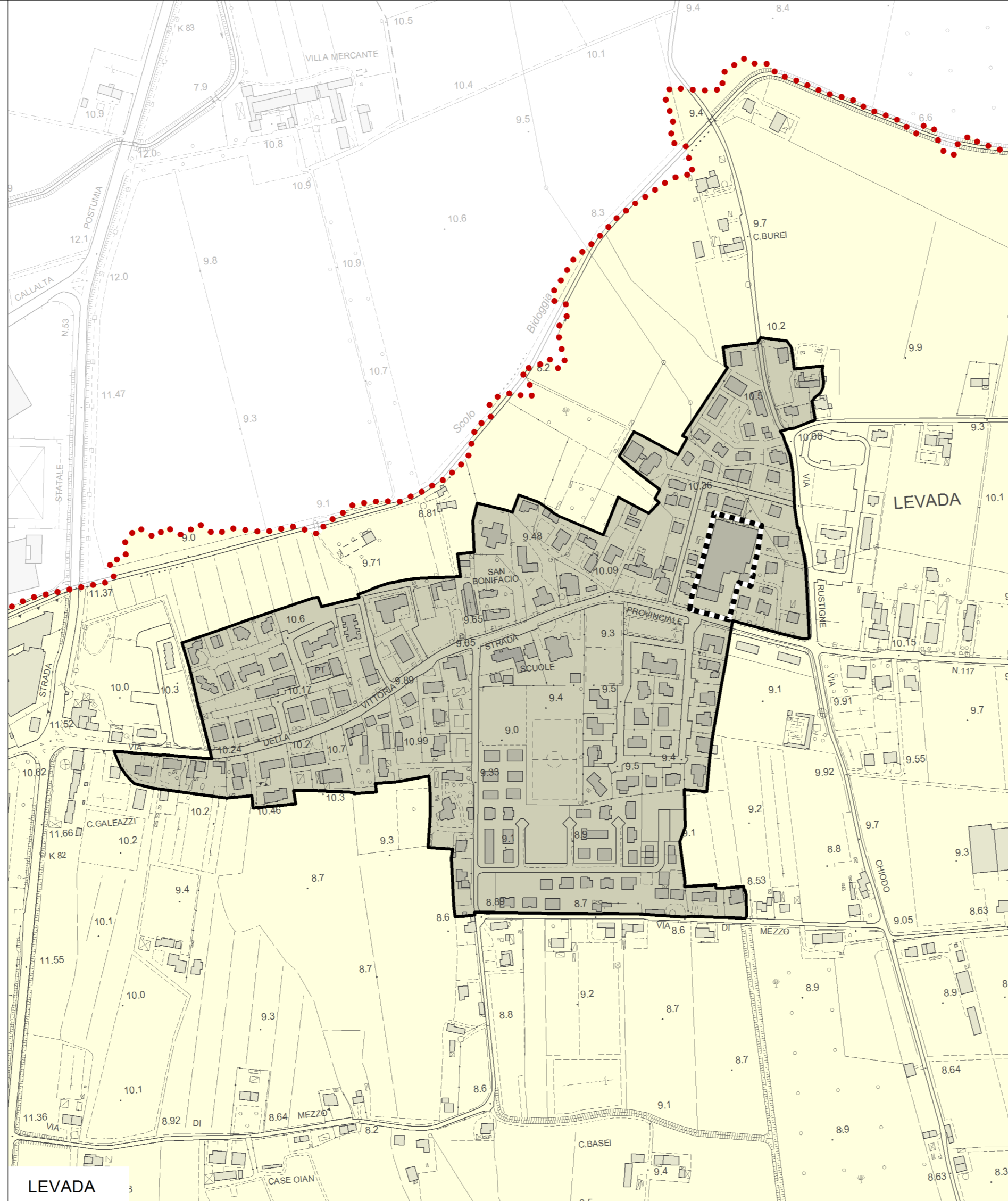
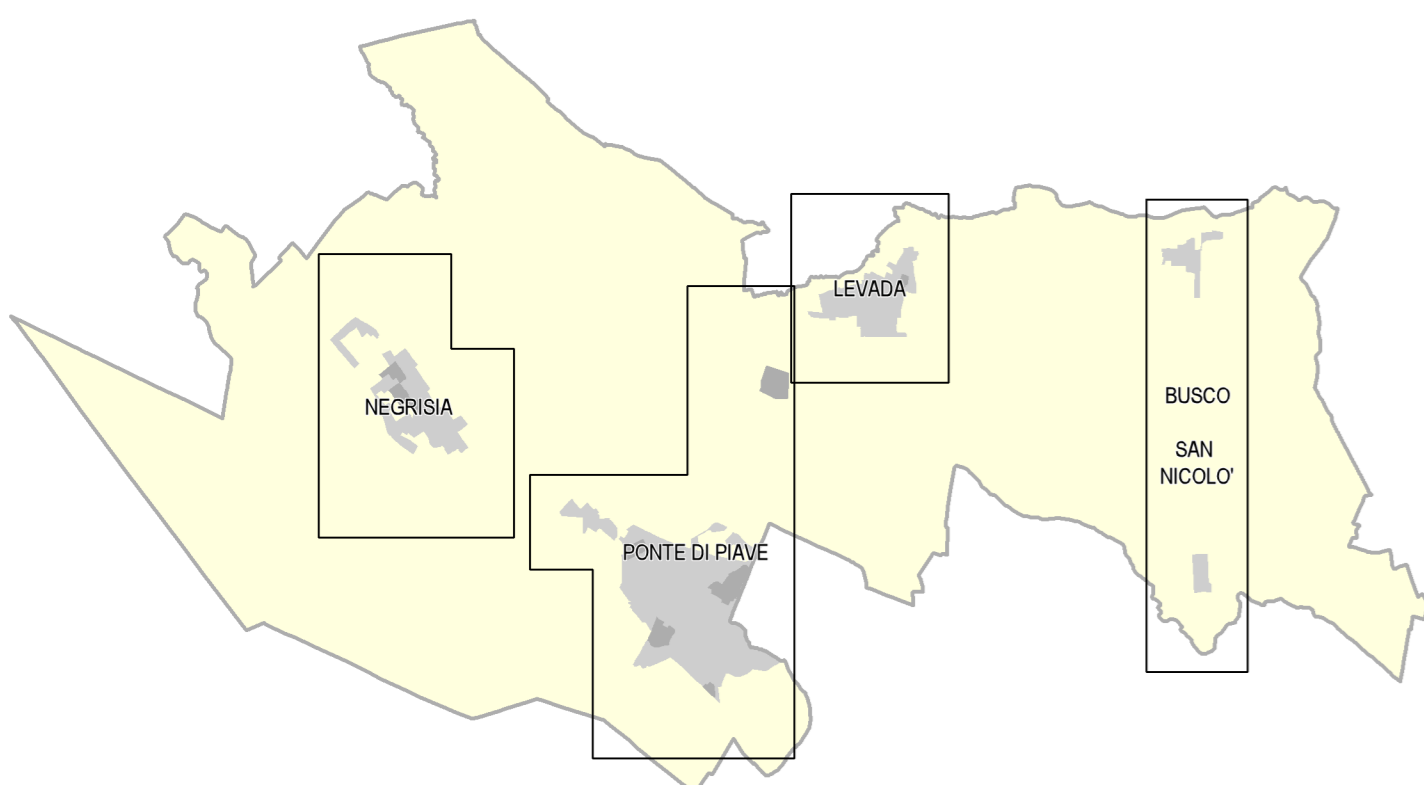


LEGENDA

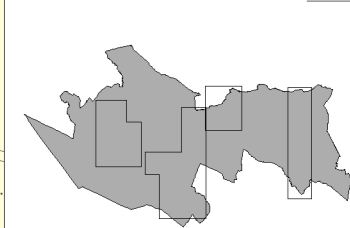
-  Contine comunale
-  Perimetro del centro urbano art. 3 L.R. 50/2012
-  Aree o strutture dismesse e degradate da riqualificare



geom. Maurizio Cella
Responsabile del Servizio Urbanistica

ing. Luca Zanella
Progettista

dot. ssa Paola Roma
Studio



5

scala 1:5000
dicembre 2017

COMUNE DI PONTE DI PIAVE - TV
SECONDO PIANO DEGLI INTERVENTI - VARIANTE 2
Perimetro del centro urbano art. 3 L.R. 50/2012
e aree o strutture dismesse e degradate da riqualificare
Edizione completa in approvazione

